

# PACIFIC AREA CHAMBER OF COMMERCE

## FRIDAY SEPTEMBER 5, 2014 UPDATE



333 CHAMBER DR.  
PACIFIC, MO 63069  
636-271-6639

WEBSITE: [WWW.PACIFICCHAMBER.COM](http://WWW.PACIFICCHAMBER.COM)  
EMAIL: [EXDIR@PACIFICCHAMBER.COM](mailto:EXDIR@PACIFICCHAMBER.COM)  
EXECUTIVE DIRECTOR: TIFFANY WILSON



### Business of the Month -- **Schrader Funeral Home**

Schrader has been in West St. Louis County since their founding in 1868, and is owned and managed by fourth and fifth generation family members today. Schrader is the oldest of the few family-owned funeral homes in the metropolitan area of St. Louis, and one of the oldest in the state of Missouri. They have helped thousands of families who have trusted Schrader's well-established reputation in our community for their funeral and cremation arrangements.

They have two locations, one in Ballwin and the other in Eureka. The Ballwin location also has an onsite crematory.

14960 Manchester Rd., Ballwin, MO 63011  
636.227.5511

108 N. Central Ave., Eureka, MO 63025  
636.938.3000

<http://www.schrader.com/?page=index>

Compassionate Spirit, Consistent Service, and Continuing Support is the mission of Schrader Funeral Home.



---

### Upcoming Chamber and Community Events...

Every Saturday thru Sept 20<sup>th</sup> – Pacific Farmers Market, Pacific Station Plaza, 8am-12pm

September 8<sup>th</sup> – Pacific Community Fall Blood Drive, Meramec Ambulance Building, 3pm-7pm

<https://donateblood.mercy.net/bdrive/user?action=1&AllLocationsID=661&Location=Meramec%20Ambulance>

September 10<sup>th</sup> – Rachel's Challenge Community Event, PHS Auditorium, 6:30-7:30

[www.rachelschallenge.org](http://www.rachelschallenge.org)

September 20<sup>th</sup> – Railroad Days, Pacific Station Plaza, 9am-8pm <http://www.pacific-partnership.org/>

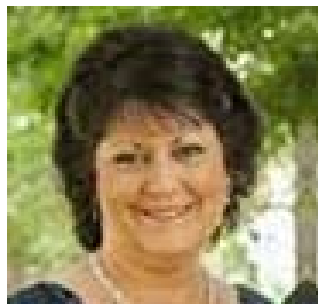
September 20<sup>th</sup> – PHS Homecoming Parade, Downtown Pacific, parade starts at 10am

September 25<sup>th</sup> – General Membership Meeting, Pacific Area Chamber of Commerce, Eagles, 12pm [www.pacificchamber.com](http://www.pacificchamber.com)

October 10<sup>th</sup> & 11<sup>th</sup> – Iron Horse Rodeo, Liberty Field, 4-7 both days sponsored by City of Pacific

## KNOW YOUR BOARD

Joyce Couch has worked at Husky Corporation for the last 34 years. Her current title with the company is Customer Service and Human Resource Manager. Outside of work she is a busy lady, belonging to several different clubs and organizations. Joyce is the Director on the Washington Town and Country Fair Board. She sits on the Petroleum Equipment Institute "PEI" Women Board and is the Secretary of the Missouri SHARP Association. Joyce has been on the Pacific Area Chamber of Commerce's board for the last 4 years.



In her spare time Joyce enjoys skeet shooting with her husband and traveling. She also stays busy as a mother of 2 sons (one married and another scheduled to be married) and is very happy that she just became a grandma for the first time. On behalf of the Chamber help me in saying "Welcome Baby Wyatt" and congrats Grandma Joyce!

### Sales/Deals Around Town

[www.annmichellephoto.com](http://www.annmichellephoto.com)  
<http://www.taztsmore.com/>  
<http://www.mcdapp.com>

### Coming up at the City of Pacific

September 8th – Tourism Meeting 1pm  
September 8th – Park Board 6pm  
September 11th – Municipal Court 7pm

### Mission Statement:

The Pacific Area Chamber of Commerce is a partnership with businesses, government and the community whose mission is to:

- Promote the community
- Be a voice for business
- Encourage economic growth of new and existing businesses

### For Sale/Rent...

<http://www.2406smokeymountain.coldwellbankerpremier.com/>

[www.facebook.com/summitvalley63069](http://www.facebook.com/summitvalley63069)

### Quote of the week...

Communication leads to community, that is, to understanding, intimacy and mutual valuing. **Rollo May, an American existential psychologist and author of the influential book Love and Will**

## **SHOP LOCAL!!!**

### **MERAMEC VALLEY GIFT CERTIFICATES**

- **GOOD LOCATIONS LISTED ON THE BACK OF THE GIFT CERTIFICATE**
- **SPEND JUST LIKE CASH!!!**
- **COME IN INCREMENTS OF \$5, \$10, & \$25**
- **BUSINESSES ARE REFUNDED DOLLAR FOR DOLLAR**

**STOP IN AT PACIFIC AREA  
CHAMBER OF COMMERCE TO  
PURCHASE YOUR MVGC TODAY!**



### Local News Sources...

<http://www.emissourian.com/>  
<http://www.currentnewsmagazine.com>